



55th World Congress of Chess Composition  
 36th World Chess Solving Championship  
 Kobe, Japan 15-22 September 2012



## Long Thematic Tourney --- Helpmate in 2.5 moves

**Theme:** H#2.5

In two solutions (or twins) White's first and second moves are exchanged (A - B in one solution & B - A in the second). The mate is different. No fairy pieces or conditions allowed.

**Judge:** Marjan Kovačević

**Closing Date:** Entries to the congress desk before 19th of September (Wednesday), 6 p.m.

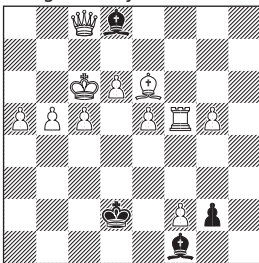
**Prizes:** Japanese handicrafts.

**Remarks:** The tourney is open only to congress participants.

We accept only computer-tested problems.

### Examples

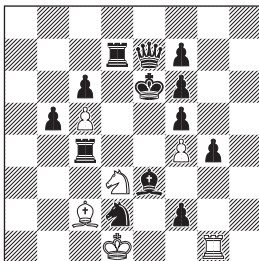
**Ex1** Ofer Comay  
 Israel Ring Tourney 1992-93 1st Prize



H#2.5 2 solutions (11+4)

1...Rf3 2.Ke2 Bc4+ 3.Kxf3 Qf5#  
 1...Bc4 2.Kc3 Rf3+ 3.Kxc4 Qg4#

**Ex2** Janos Csak  
 Serock 2008-09 1st-2nd Prize e.a.



H#2.5 (6+13)

b) Rd7→d6

a) 1...Bb3 2.Bxf4 Re1+ 3.Be5 Sf4#  
 b) 1...Re1 2.Rxc5 Bb3+ 3.Rcd5 Sc5#