



55th World Congress of Chess Composition  
 36th World Chess Solving Championship  
 Kobe, Japan 15-22 September 2012



## Champagne Tourney

**Theme:** The long travel (guess how idea of this theme came to me...)

The Tourney is divided in 2 sections (with separate awards) :

A . Proof Games B . Any other kind of Retro problems.

Fairy conditions allowed in both sections.

**Judge:** Michel Caillaud

**Closing Date:** Entries to Michel Caillaud by Wednesday 19th September 9:00 PM

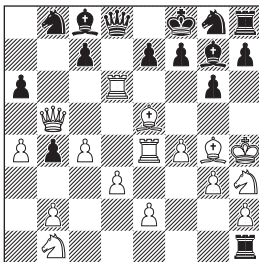
The Tourney is open only to congress participants.

**Remarks:** Maximum 3 entries per composer per section. Maximum 1 non computer tested entry per composer in section A.

**More detailed explanation of the theme:** retro problem where a specific piece accomplishes a significant journey. Free interpretation is left to composers (no need of small steps like in examples...journey can include switchbacks...thematic piece can be promoted during the play...).

**Examples** Michel Caillaud

**Ex-A** Noam Livnat  
 StrateGems 1998 3rd Prize

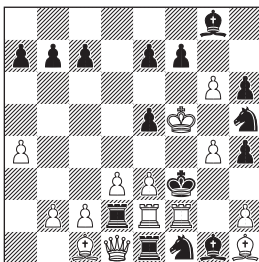


Proof Game in 21.5 (16+15)

1.c4 b5 2.Qa4 b4 3.Qb5 g6 4.a4 Bg7 5.Ra3 Kf8 6.Rd3  
 d6 7.R\*d6 a6 8.d3 **Ra7** 9.Bf4 **Rb7** 10.Be5 **Rb6** 11.f4  
**Rc6** 12.Kf2 **Rc5** 13.Kg3 **Rd5** 14.Kh4 **Rd4** 15.g3 **Re4**  
 16.Bh3 **Re3** 17.Bg4 **Rf3** 18.Sh3 **Rf2** 19.Rf1 **Rg2**  
 20.Rf3 **Rg1** 21.Re3 **Rh1** 22.Re4

Long travel by black Rook

**Ex-B** Alexander Kislyak  
 Schach 1990



Last 16 single moves? (14+15)

-1.Rg2-f2† **Bf2-g1** -2.a3-a4 **Bg3-f2** -3.a2-a3 **Bf4-g3**  
 -4.g3-g4 **Bg5-f4** -5.f2\*Qg3 **Bf6-g5** -6.g5-g6 **Bg7-f6**  
 -7.g4-g5 **Bf8-g7** -8.Kg5-f5 **g7\*Sh6+**

Long travel by black Bishop