

*Kobe 2012*

## 15<sup>th</sup> SABRA Composing Tourney

**Orthodox H#2 are required showing the following theme:**

**A White piece "A" is pinned in the diagram position. Black can unpin "A" in his first move but it actually unpins "A" only in the second move.**

**Judge:** Menachem Witztum

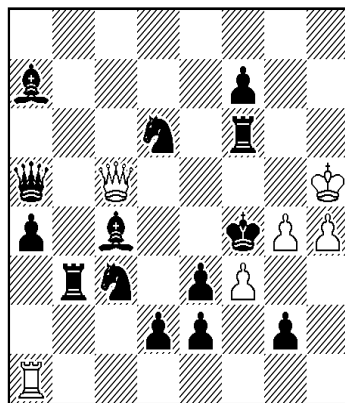
**Prize:** 1 bottle of **SABRA** - the liqueur of Israel for your enjoyment.

The tourney is open for all composers, but composers that are not congress participants can submit only one problem for the tourney. The prize is for congress participants only.

**Entries** should be submitted to **Paz Einat** until Wednesday 19/9/2012 at 19:00.

Example :

**Menachem Witztum**



H#2 b)-(w)f3 (C+) (6+14)

a) 1. Bc4-e6 (Sd5?)Ra1-f1 2. Sc3-d5 (Sb5?) Qc5xd6 #

b) 1. Rb3-b6 (Sb5?)Ra1-a3 2. Sc3-b5 (Sd5?) Qc5xe3 #